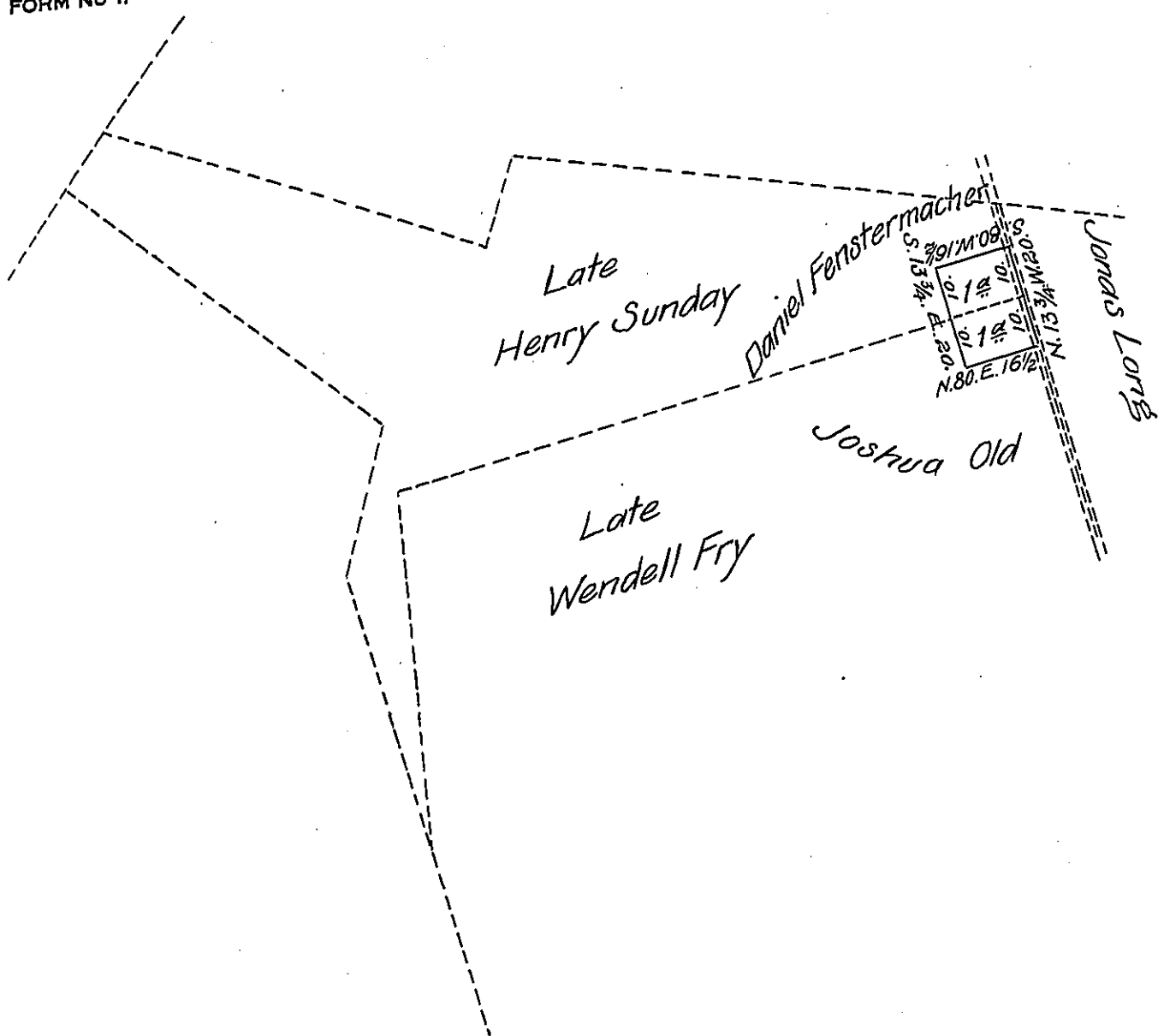


FORM NO 1.



Draft of a tract of land situate in Lynn township, Lehigh County, containing two acres and allowance of six per cent for roads &c. One acre thereof being part of 4 1/2 acs &c. on Wt. Jan'y 31<sup>st</sup> 1771 to Henry Sunday; and one acre being part of 72 acs 145 ps &c. on Wt. 22<sup>d</sup> May 1759 to Wendell Fry & being the unpatented balance of this last tract. The above returned for Jonas Long.

Geo. Blank C.S.

To R. B. Beath Esq. }  
 Suryor General. }

IN TESTIMONY that the above is a copy of the original remaining on file in the Department of Internal Affairs of Pennsylvania, made conformably to an Act of Assembly approved the 16th day of February, 1833, I have hereunto set my Hand and caused the Seal of said Department to be affixed at Harrisburg, this first day of April 1907.

*Geo. A. Brown*  
 Secretary of Internal Affairs.